

Shower Fittings

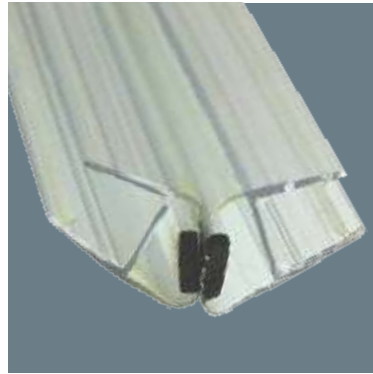
PVC Glass Seal / Magnetic Glass Seal



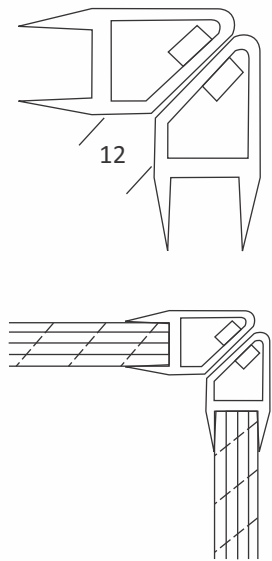
PRODUCT CODE
CGS - 13

Glass To Glass
Magnetic Seal (90°)

Features :
Material : PVC Magnet
Glass Thickness :
8mm To 12mm
Finish : Transparent
Length : 2.2 Mtr



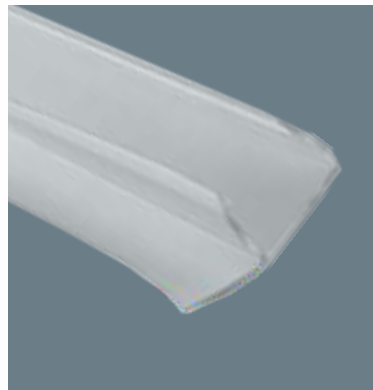
Application
◆ Fix Glass ◆ Openable Glass Door ◆ Sliding Glass Door
◆ Used Between Door And Fixed Glass For Standstill Position.



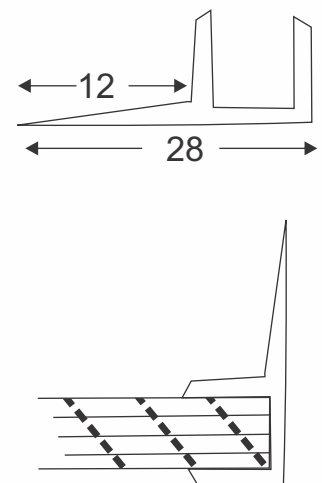
PRODUCT CODE
CGS - 14

Glass To Glass
Magnetic Seal (90°)

Features :
Material : Pvc
Glass Thickness :
8mm To 12mm
Finish : Transparent
Length : 2.2 Mtr



Application
◆ Fix Glass ◆ Openable Glass Door
◆ Sliding Glass Door
Used Between Door And Side Panel And Opposite Hinge End.



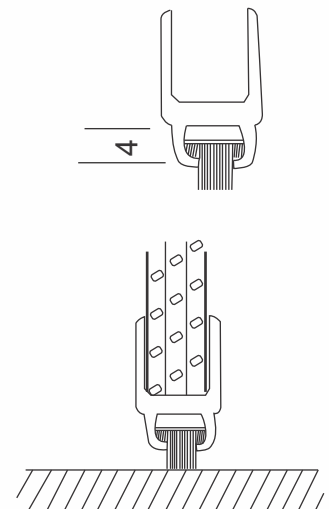
PRODUCT CODE
CGS - 16

Glass To Glass
Magnetic Seal (90°)

Features :
Material : PVC Magnet
Glass Thickness :
8mm To 12mm
Finish : Transparent
Length : 2.2 Mtr



Application
◆ Fix Glass ◆ Openable Glass Door ◆ Sliding Glass Door
Used Between Door And Fixed Glass For Standstill Position.



Shower Fittings

Magnetic Glass Seal / Glass Connector



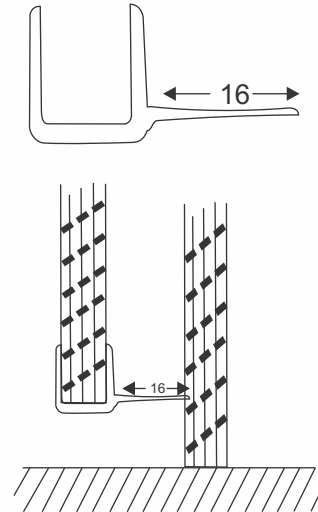
PRODUCT CODE CGS - 17

Glass To Glass
Magnetic Seal (90°)



Features :
Material : Pvc
Glass Thickness :
 8mm To 12mm
Finish : Transparent
Length : 2.2 Mtr

Application
 ♦ Fix Glass ♦ Openable Glass Door ♦ Sliding Glass Door
 Used Between Door And Fixed Glass For Standstill Position.



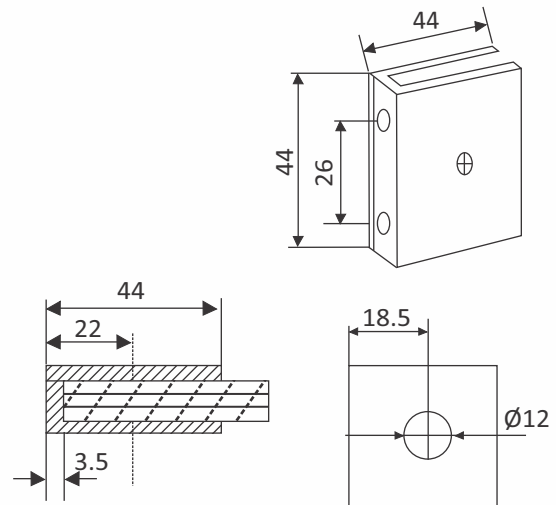
PRODUCT CODE CGC - 01

Fix Connector (SS 304)



Features :
Material : Stainless Steel
Glass Thickness : 8mm To 12mm
Finish : Satin Stainless Steel (SSS)

Application
 ♦ Glass Fixing To Wall Or Floor



Hole Dimension Of Glass

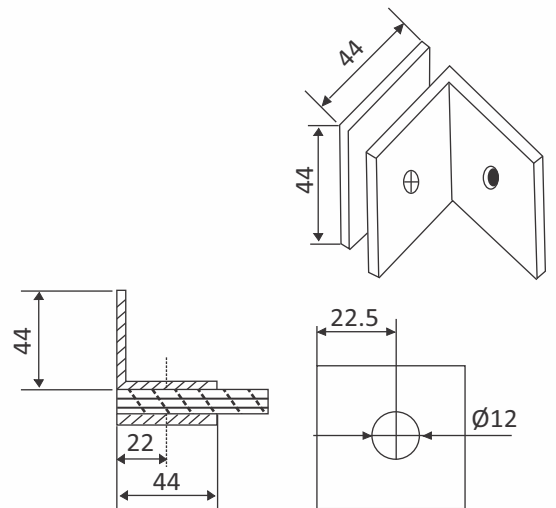
PRODUCT CODE CGC - 02

Wall To Glass
Connector (90°)
(SS 304)



Features :
Material : Stainless Steel
Glass Thickness : 8mm To 12mm
Finish : Satin Stainless Steel (SSS)

Application
 ♦ Glass Fixing To Wall Or Floor



Hole Dimension Of Glass

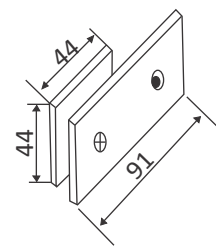
Shower Fittings

Glass Connector



PRODUCT CODE CGC - 03

Wall To Glass
Connector (180°)
(SS 304)



Features :

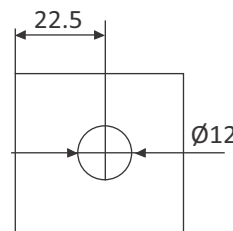
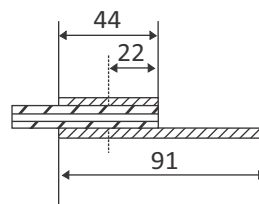
Material : Stainless Steel

Glass Thickness : 8mm To 12mm

Finish : Satin Stainless Steel (SSS)

Application

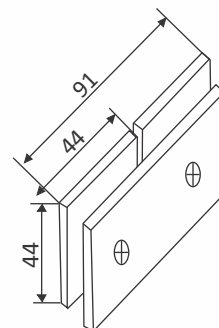
◆ Glass Fixing To Wall



Hole Dimension of Glass

PRODUCT CODE CGC - 04

Glass To Glass
Connector (180°)
(SS 304)



Features :

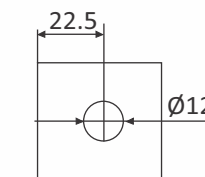
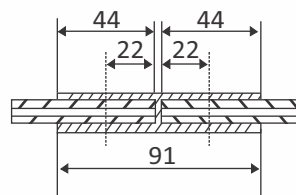
Material : Stainless Steel

Glass Thickness : 8mm To 12mm

Finish : Satin Stainless Steel (SSS)

Application

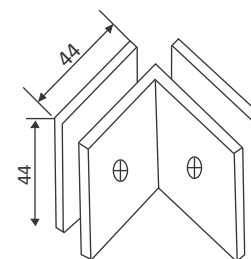
◆ Two Glass Fixing In 180°



Hole Dimension of Glass

PRODUCT CODE CGC - 05

Glass To Glass
Connector (90°)
(SS 304)



Features :

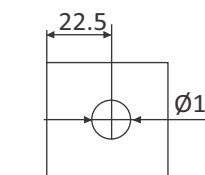
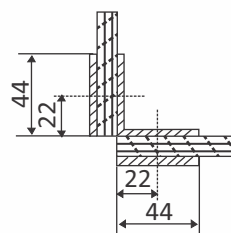
Material : Stainless Steel

Glass Thickness : 8mm To 12mm

Finish : Satin Stainless Steel (SSS)

Application

◆ Two Glass Fixing In 90°



Hole Dimension Of Glass

Shower Fittings

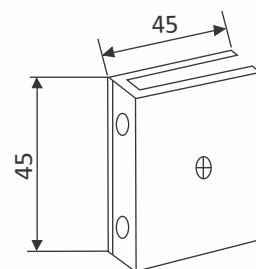
Glass Connector



PRODUCT CODE

CGC- 11

Fix Connector



Features :

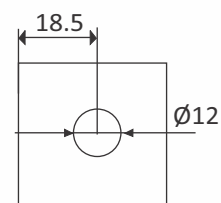
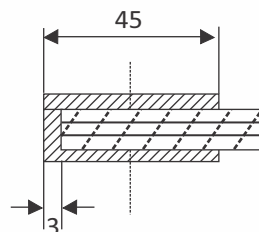
Material : Stainless Steel

Glass Thickness : 8mm To 12mm

Finish : SS, CP

Application

◆ Glass Fixing To Wall Or Floor

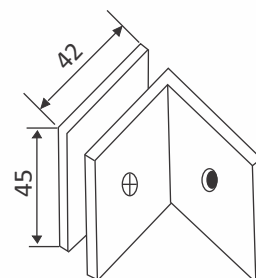


Hole Dimension Of Glass

PRODUCT CODE

CGC- 12

Wall To Glass
Connector 90°



Features :

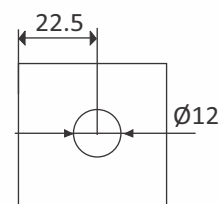
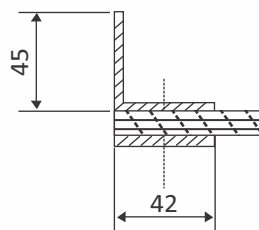
Material : Stainless Steel

Glass Thickness : 8mm To 12mm

Finish : SS, CP

Application

◆ Glass Fixing To Wall Or Floor

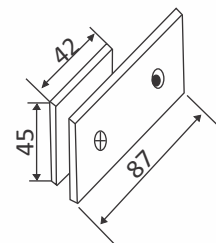


Hole Dimension Of Glass

PRODUCT CODE

CGC- 13

Wall To Glass
Connector 180°



Features :

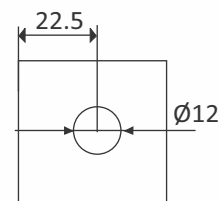
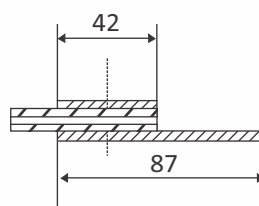
Material : Stainless Steel

Glass Thickness : 8mm To 12mm

Finish : SS, CP

Application

◆ Glass Fixing To Wall



Hole Dimension Of Glass

Shower Fittings

Glass Connector



PRODUCT CODE

CGC- 14

Glass To Glass
Connector 180°



Features :

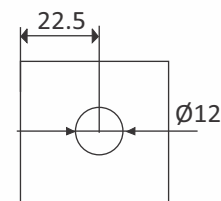
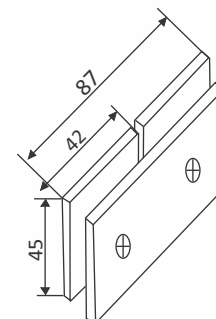
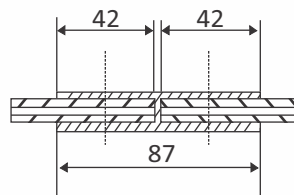
Material : Stainless Steel

Glass Thickness : 8mm To 12mm

Finish : SS, CP

Application

◆ Two Glass Fixing In 180°



Hole Dimension Of Glass

PRODUCT CODE

CGC- 15

Glass To Glass
Connector 90°



Features :

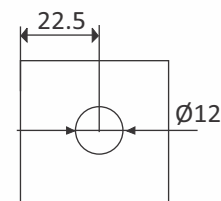
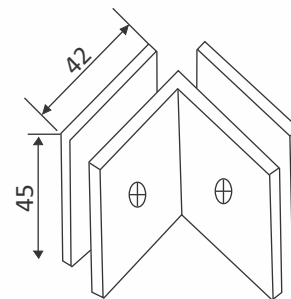
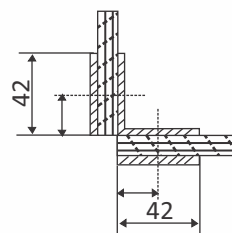
Material : Stainless Steel

Glass Thickness : 8mm To 12mm

Finish : SS, CP

Application

◆ Two Glass Fixing In 90°



Hole Dimension Of Glass

PRODUCT CODE

CGC- 21

Fix Connector



Features :

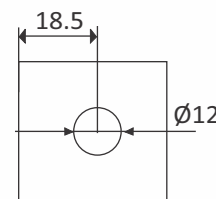
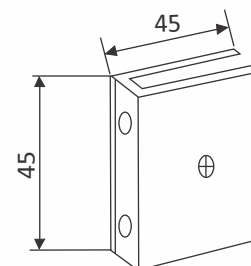
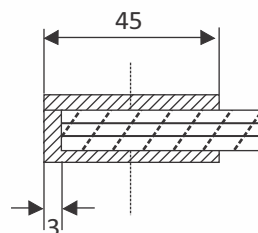
Material : Stainless Steel

Glass Thickness : 8mm To 12mm

Finish : SS, CP

Application

◆ Glass Fixing To Wall Or Floor



Hole Dimension Of Glass

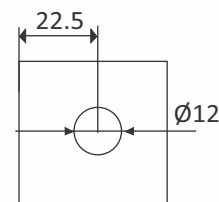
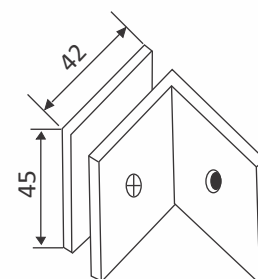
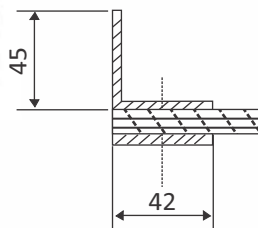
Shower Fittings

Glass Connector



PRODUCT CODE CGC- 22

Wall To Glass
Connector 90°



Features :

Material : Stainless Steel

Glass Thickness : 8mm To 12mm

Finish : SS, CP

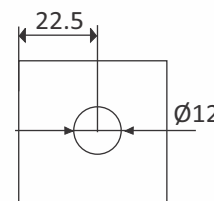
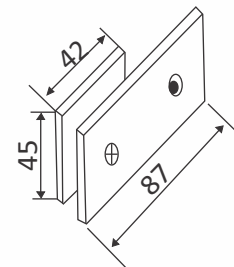
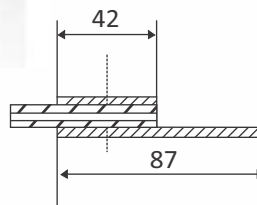
Application

◆ Glass Fixing To Wall Or Floor

Hole Dimension Of Glass

PRODUCT CODE CGC- 23

Wall To Glass
Connector 180°



Features :

Material : Stainless Steel

Glass Thickness : 8mm To 12mm

Finish : SS, CP

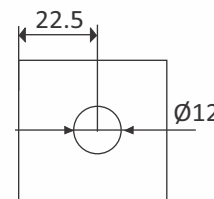
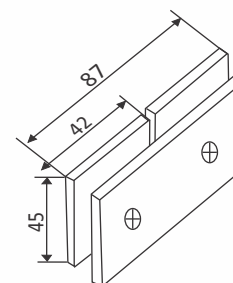
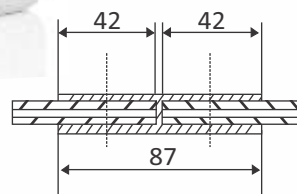
Application

◆ Glass Fixing To Wall

Hole Dimension Of Glass

PRODUCT CODE CGC- 24

Glass To Glass
Connector
90°



Features :

Material : Stainless Steel

Glass Thickness : 8mm To 12mm

Finish : SS, CP

Application

◆ Two Glass Fixing In 180°

Hole Dimension Of Glass

Shower Fittings

Glass Connector



PRODUCT CODE CGC- 25

Glass To Glass
Connector 90°



Features :

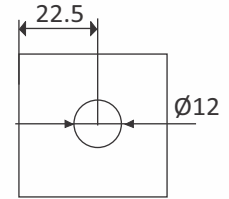
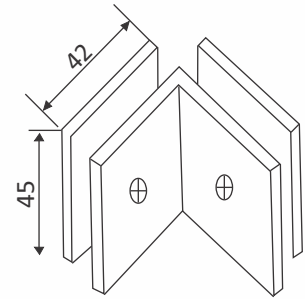
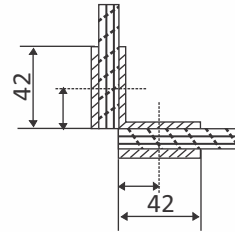
Material : Stainless Steel

Glass Thickness : 8mm To 12mm

Finish : SS, CP

Application

◆ Two Glass Fixing In 90°



Hole Dimension Of Glass

PRODUCT CODE CGB - 01

Fix Connector
(BRASS) (CP)



Features :

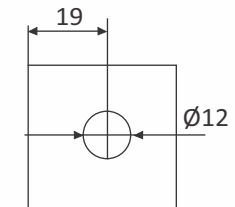
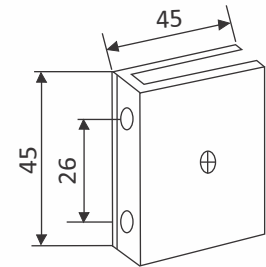
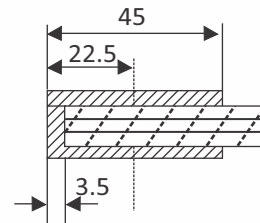
Material : Brass

Glass Thickness : 8mm To 12mm

Finish : Chrome (CP)

Application

◆ Glass Fixing To Wall Or Floor



Hole Dimension Of Glass

PRODUCT CODE CGB - 02

Wall To Glass
Connector 90°
(BRASS) (CP)



Features :

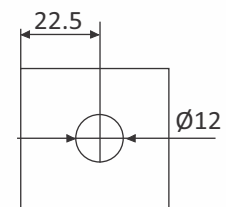
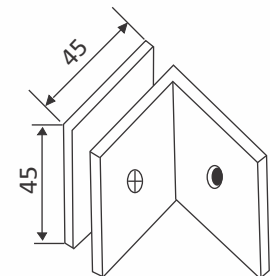
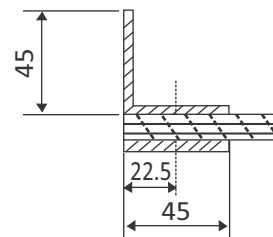
Material : Brass

Glass Thickness : 8mm To 12mm

Finish : Chrome (CP)

Application

◆ Glass Fixing To Wall Or Floor



Hole Dimension Of Glass